

Pinwheel Table Runner

Finished size – 40" x 16"

Background fabric- 1 yard

Backing fabric- ½ yard

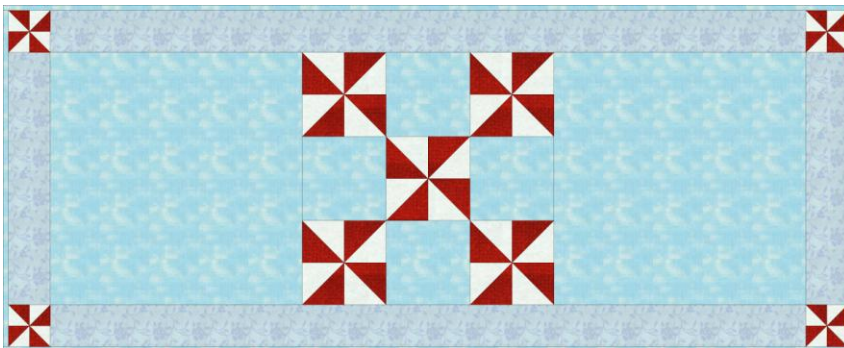
Pinwheel Color #1- ¼ yard

Pinwheel Color #2- ¼ yard

Border- ¼ yard

Binding- ¼ yard

Batting – 42" x 18" piece



From backing fabric-

Cut 2- 12 ½" x 12 ½" squares

Cut 1 – 4 ½" strip by WOF

Then cut 4 – 4 ½" squares

From Pinwheel Color #1 fabric-

Cut 1 – 3" strip by WOF

Then cut 10 – 3" squares

Then cut each square in half corner to corner for a total of 20 Triangles

(set aside for pinwheel block)

Cut 8 -2" squares

Then cut each square in half corner to corner for a total of 16 triangles

(set aside for the border corner pinwheel blocks)

From Pinwheel Color #2 fabric-

Cut 1 – 3" strip by WOF

Then cut 10 – 3" squares

This is a great table runner to feature any Quilt Doodle Designs appliqué patterns in the 12 ½" blocks!

Then cut each square in half corner to corner for a total of 20 Triangles
(set aside for pinwheel block)

Cut 8 -2" squares

Then cut each square in half corner to corner for a total of 16 triangles
(set aside for the border corner pinwheel blocks)

From Border fabric

Cut 3- 2 ½" x WOF

Then cut 2 – 36 ½" x 2 ½" strips

2- 12 ½" x 2 ½" strips

Binding fabric-

Cut 3 – 2 ½" x WOF

Let's Sew!!!

Pinwheel Block- Make 1

Pair 1 triangle color #1 and color #2 together
Right sides together. Sew along the long end to
Make a triangle square. (make 20 total) Trim
Triangle squares to measure 2 ½" x2 ½". Then sew
4 triangle blocks together to make a pinwheel
Square. Following the layout (diagram 1) sew
Pinwheel squares and background 4 ½" squares
Together to form the Pinwheel center block.

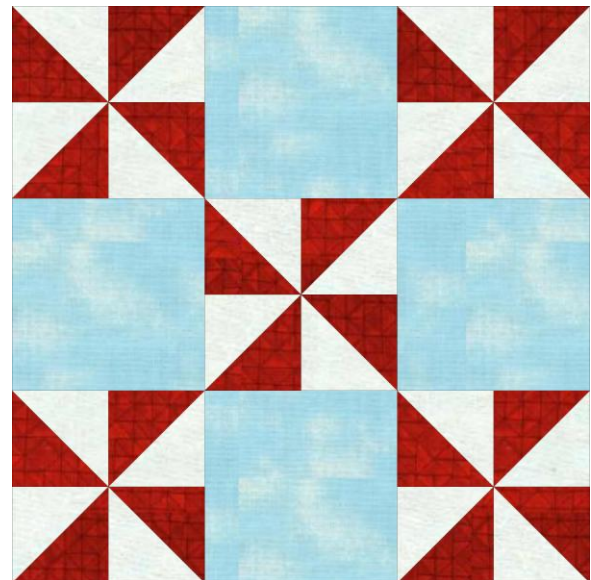


Diagram 1

Corner Pinwheel Block- Make 4

Pair 1 triangle color #1 and color #2 together
Right sides together. Sew along the long end to
Make a triangle square. (make 16 total) Trim
Triangle squares to measure 1 ½" x1 ½". Then sew
4 triangle blocks together to make a pinwheel
Square. (Diagram 2)

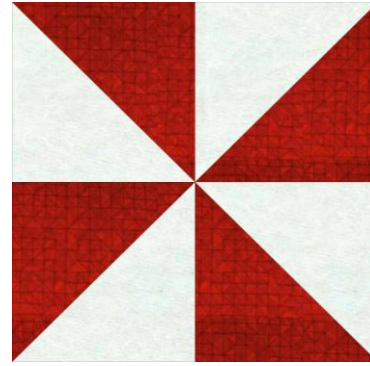
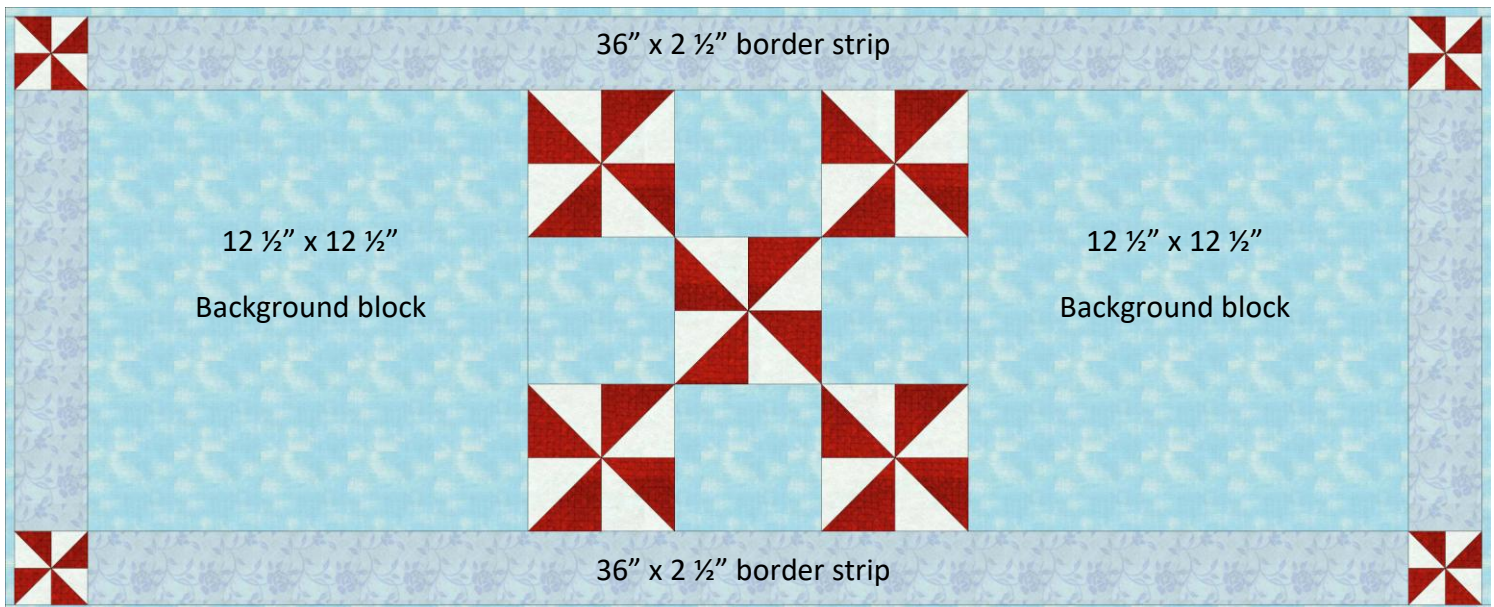


Diagram 2

Following the layout below sew together the 12 ½" back ground blocks and Pinwheel blocks together. Then add the borders.



Then layer table runner top with batting and backing and quilt as desired.

Binding: Join the strips end to end to create a 2 ½" wide strip long enough to go around outside edge of quilt. Fold strip in half lengthwise, iron. Sew onto quilt front sewing a ¼" seam, miter the corners. Fold binding around the outer edge of the table runner and hem the binding to the back of the table runner.